



PRCC.29 14/15

**Prosperous Communities
Committee**

Date: 14 October 2014

G

Subject: The role of the Member Health Champion

Report by:	Head of Central Services
Contact Officer:	Alan Robinson Head of Central Services T: 01427 676509
Purpose / Summary:	To inform members of the role of the Member Health Champion

RECOMMENDATIONS: That members note the details of the role of Health Champion. Members agree that an annual report should be provided to Prosperous Communities Committee and that Quarterly liaison meetings between the Health Champion and the Chair and Vice Chairs of the committee are established.

IMPLICATIONS

Legal: None

Financial : None [FIN/66/15](#)

Staffing : None

Equality and Diversity including Human Rights : N/A

Risk Assessment : N/A

Climate Related Risks and Opportunities : None

Title and Location of any Background Papers used in the preparation of this report:

Call in and Urgency:

Is the decision one which Rule 14 of the Scrutiny Procedure Rules apply?

Yes

No

Key Decision:

Yes

No

1 Introduction

- 1.1 On 19th May 2014, at Full Council, Members requested that officers prepare a report for the Prosperous Communities Committee on the role of the Member Health Champion. The specific resolution was “that a report be submitted to Prosperous Communities and subsequently to Council on the remit and role of Councillor Alan Caine as the Council’s representative for Health issues”

2 Health Champion

- 2.1 As part of the review of the member roles and representation on outside bodies the administration decided that it would be helpful to have a single member to take on a coordinating role for all matters relating to Health. Councillor Caine was nominated to take this role.

- 2.2 Councillor Caine has been appointed to the following bodies

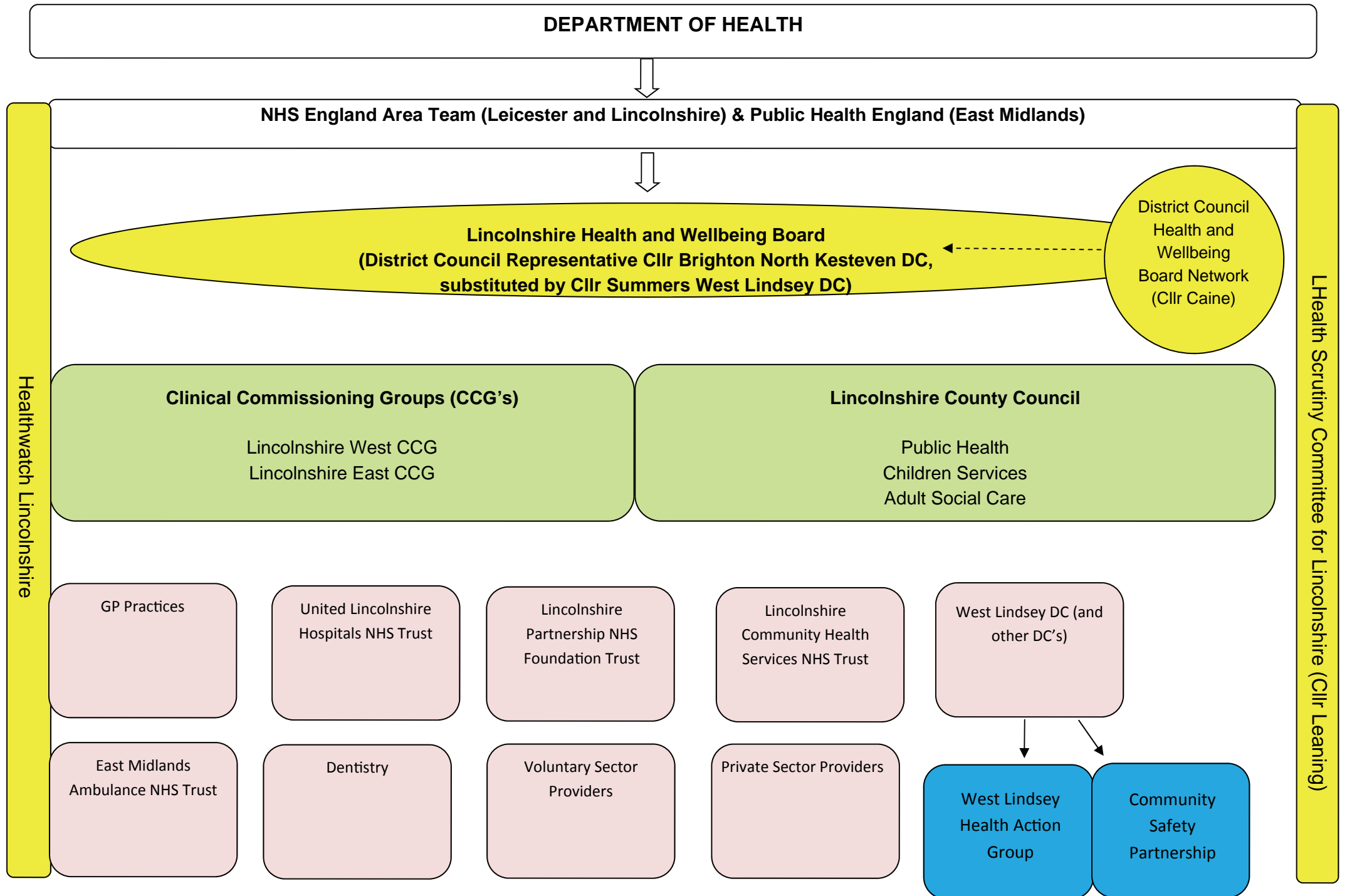
- Louth Healthwatch (East Lindsey Locality Community Health Forum)
- Lincolnshire Wolds Countryside Management Project
- Wolds Community Transport Association Ltd
- West Lindsey Community Safety Partnership
- Lincolnshire Carers Partnership
- District Health & Wellbeing Network

- 2.3 These appointments have been agreed at full council. They are all related to health matters and are complimentary to the role. The reason for the role is to ensure that there is consistency on all of these groups on the subject of health.

- 2.4 At the meeting of Full Council, on 19th May 2014, Councillor Caine was recommended as the Council’s representative on the County Health Scrutiny Committee. However Councillor Caine was not eligible for this role as membership is restricted to members of District Council Scrutiny Committees. Therefore Councillor Leaning is the West Lindsey representative on the Health Scrutiny Committee. Councillor Caine liaises with Councillor Leaning to ensure that their approach is consistent.

- 2.5 The legal responsibility for Health rests with the Prosperous Communities Committee. Liaison and reporting lines between the Health Champion and the Committee need to be clear and effective. It is recommended that an annual report is provided to Prosperous Communities and that Quarterly Liaison meetings with the Chair and Vice Chairs are arranged.

- 2.6 The role of Health Champion does not receive any Special Responsibility Allowance and does not give any executive powers to make decisions on behalf of West Lindsey District Council.
- 2.7 In practice, the role is wide ranging and involves working with a range of officers and members to coordinate activity and information. The Health Agenda is complex and therefore appendix 1 shows how the various roles fit together. Appendix 2 gives a brief explanation of the roles of the bodies involved in Health.



Appendix 2

NHS England

The main aim of NHS England is to improve the health outcomes for people in England. The area team work with seven CCGs, local authorities, district councils, Public Health England, Health Education East Midlands, four local Healthwatch bodies and the NHS Trust Development Authority to achieve these outcomes in our area. As well as carrying out local functions for NHS England, such as commissioning primary care, NHS England (Leicestershire and Lincolnshire) is responsible for managing European Cross Border Healthcare nationally and specialised commissioning and networks and senates regionally.

<http://www.england.nhs.uk/about/>

Public Health England

Public Health England (PHE) protect and improve the nation's and wellbeing, health and reduce health inequality.

<https://www.gov.uk/government/organisations/public-health-england>

Lincolnshire Health and Wellbeing Board

Health and Wellbeing Boards aim to improve the lives of local people by making it easier for health, adults and children's social care to plan and buy better services together - this is known as 'joint commissioning'. A Joint Strategic Needs Assessment report is produced every year and this is used by the Board to write a Joint Health and Wellbeing Strategy. The strategy aims to inform and influence decisions about health and social care services in Lincolnshire to make sure they meet the needs of Lincolnshire people.

<http://www.lincolnshire.gov.uk/residents/public-health/behind-the-scenes/health-and-wellbeing-board/>

Health Scrutiny Committee for Lincolnshire

The role of the Health Scrutiny Committee is to scrutinise the commissioning of and delivery performance of those who provide health and care services to the local population.

<http://www.lincolnshire.gov.uk/local-democracy/how-the-council-works/overview-and-scrutiny/the-health-scrutiny-committee-for-lincolnshire/56546.article>

Clinical Commissioning Groups (CCG's)

CCG's are responsible for the assessment of local population health needs and the commissioning of services to meet need. The governing bodies of CCG's are made up primarily of local GP's so that health service commissioning is clinically led. West Lindsey district is serviced by Lincolnshire West and Lincolnshire East CCG

<http://www.lincolnshirewestccg.nhs.uk/>
<http://lincolnshireeastccg.nhs.uk/>

Lincolnshire County Council

Upper tier local authorities now have responsibility for providing the local Public Health function. The Public Health team provides intelligence about the health of the local population so that appropriate services can be commissioned. They also provide health protection functions and commission a number of services to improve the health of local people (including children services and adult social care). The Public Health team lead the production of the Joint Strategic Needs Assessment for Lincolnshire.

Healthwatch Lincolnshire

Healthwatch works to help local people get the best out of their local health and social care services. Local Healthwatch is all about local voices being able to influence the delivery and design of local services. Healthwatch is often referred to as the 'consumer champion'.

<http://www.healthwatchlincolnshire.co.uk/>

GP Practices

GP practice provision is commissioned by the NHS England area team. GP practices are independent businesses but funded largely by NHS money, although practices may also choose to perform private work.

United Lincolnshire Hospitals NHS Trust (ULHT)

ULHT is the largest provider of acute care in Lincolnshire. The main hospitals are at Lincoln, Boston and Grantham.

<http://www.ulh.nhs.uk/>

Lincolnshire Partnership NHS Foundation Trust (LPfT)

LPfT is the main provider of mental health services in Lincolnshire.

<http://www.lpft.nhs.uk/>

Lincolnshire Community Health Services NHS Trust (LCHS)

LCHS are the main provider of community health services in Lincolnshire. This includes community nursing services, health visiting, out of hours GP provision and also delivery of services from community hospitals such as John Coupland Hospital.

<https://www.lincolnshirecommunityhealthservices.nhs.uk>

East Midlands Ambulance NHS Trust (EMAS)

EMAS provide emergency ambulance and paramedic services in Lincolnshire.

<http://www.emas.nhs.uk/>

Dentistry

Dentistry is provided by local dentists who run as independent businesses. Many will hold a contract to provide NHS funded dental provision. They are also able to offer private dental work. Some dentists will provide purely private provision.

District Councils

District Councils provide a number of statutory services that safeguard the health of local people such as environmental health and housing services. They are also funded by Lincolnshire County Council to provide additional services to support people lead a healthier lifestyle e.g. health trainers.

Voluntary and Private Sector Providers

Voluntary sector and private sector providers often hold contracts which they have been successful in winning through open tendering processes to provide local services on behalf of health and care commissioners. They can also work independently to provide services which they may either charge the individual service user for, or may have successfully received external funding to provide.