

**Tillbridge Solar Project
EN010142**

**Volume 6
Environmental Statement**

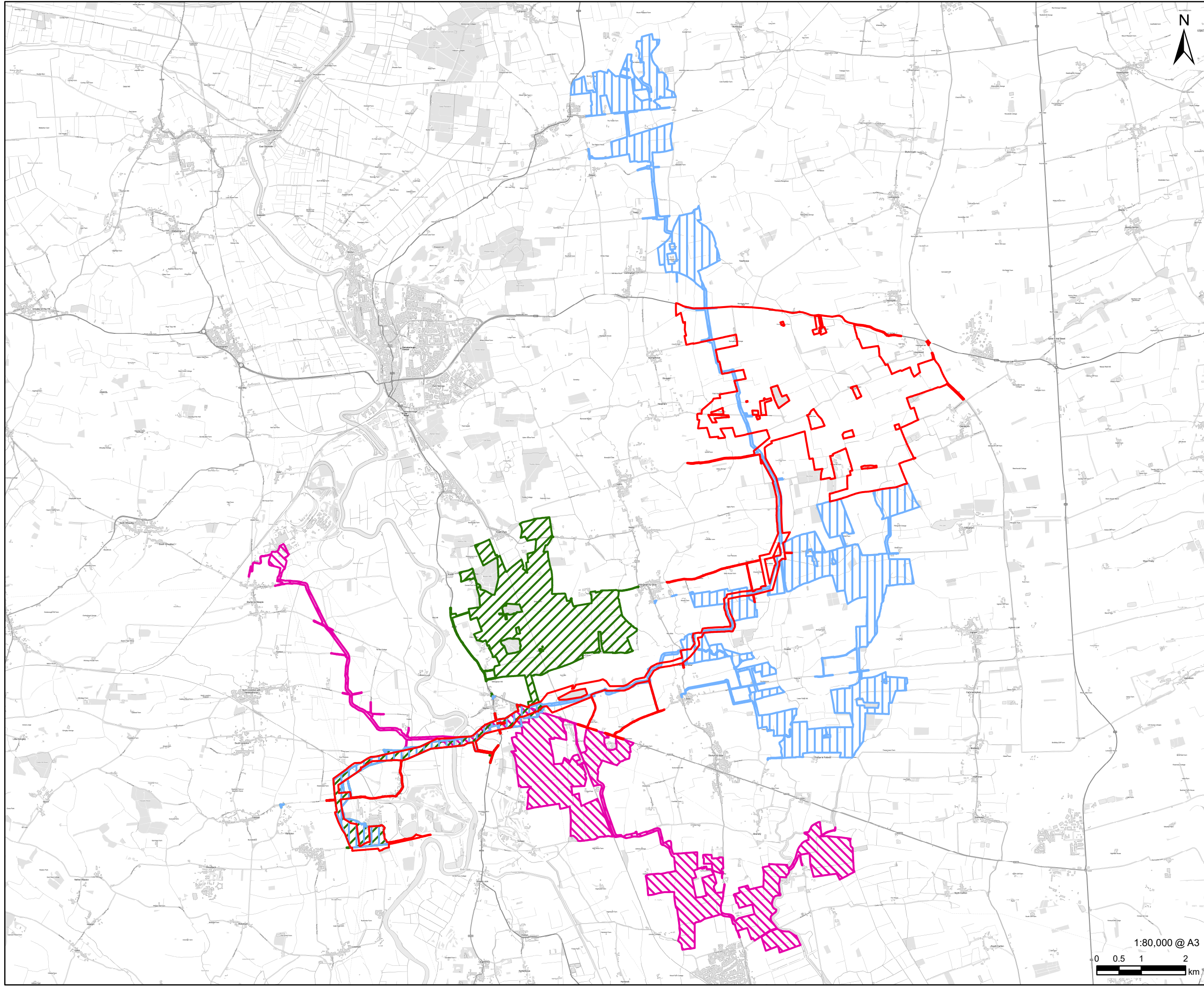
**Figure 1-1: Location of the Scheme and Other Solar NSIPs
Document Reference: EN010142/APP/6.3**

**Regulation 5(2)(a)
Infrastructure Planning (Applications: Prescribed Forms and
Procedure) Regulations 2009**

**April 2024
Revision Number: 00**

tillbridgesolar.com

Filename: I:\aecom\london\UKLON06Legacy\UKLON06PPPSW001-V\DPPELibrary\GIS_DATA\Projects\Greta III\Layout\Tillbridge Solar\ES\Chapter 1 - Introduction\240307_TillbridgeSolar_ES_Figure1-1_LocationOfNearbySolarNSIPs.mxd
Revision: 0 Drawn: HW Checked: LL Approved: CW Date: 2024-03-25



PROJECT
Tillbridge Solar Project

CLIENT
Tillbridge Solar Ltd

CONSULTANT
Aldgate Tower
2, Leman Street
London, E1 8FA
United Kingdom
T +44-0207-645-2000

LEGEND

- Order limits
- Cottam Solar DCO Order Limits
- Gate Burton DCO Order Limits
- West Burton DCO Order Limits

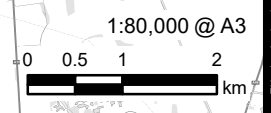
NOTES
Contains Ordnance Survey Data © Crown
Copyright and database right 2024.
© Crown copyright and database rights 2024.
Ordnance Survey 0100031673.

ISSUE PURPOSE
DCO Submission

PROJECT NUMBER
60677969

FIGURE TITLE
Location of the Scheme and Other
Solar NSIPs

FIGURE NUMBER
Figure 1-1



This drawing has been prepared by the use of AECOM's client. It may not be used, modified, reproduced or relied upon by third parties, except as agreed by AECOM or as required by law. AECOM accepts no responsibility, and denies any liability whatsoever, to any party that uses or relies on this drawing without AECOM's express written consent. Do not scale this document. All measurements must be obtained from the stated dimensions.